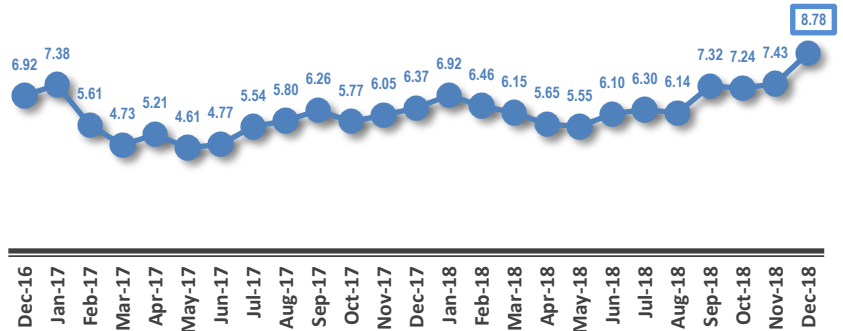
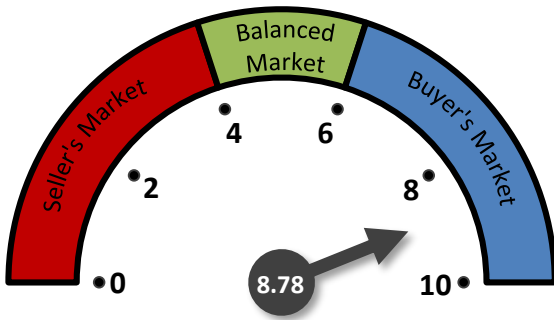
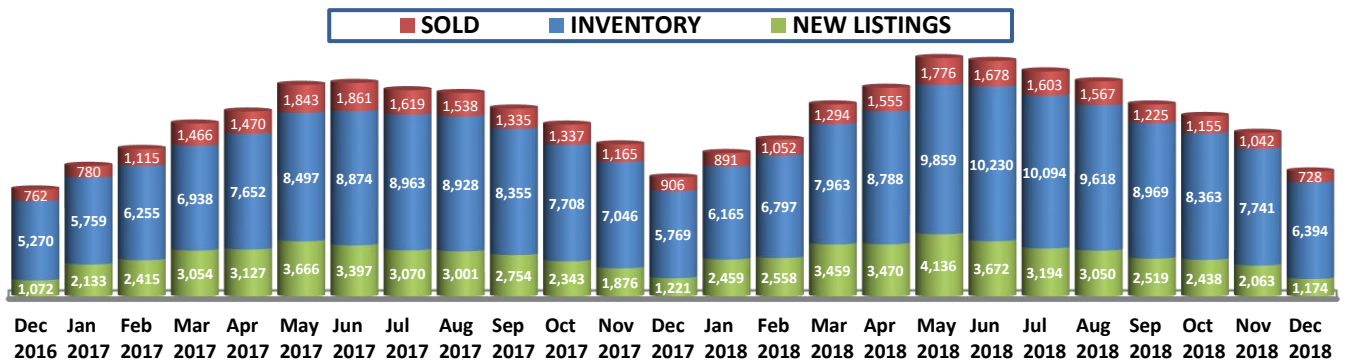


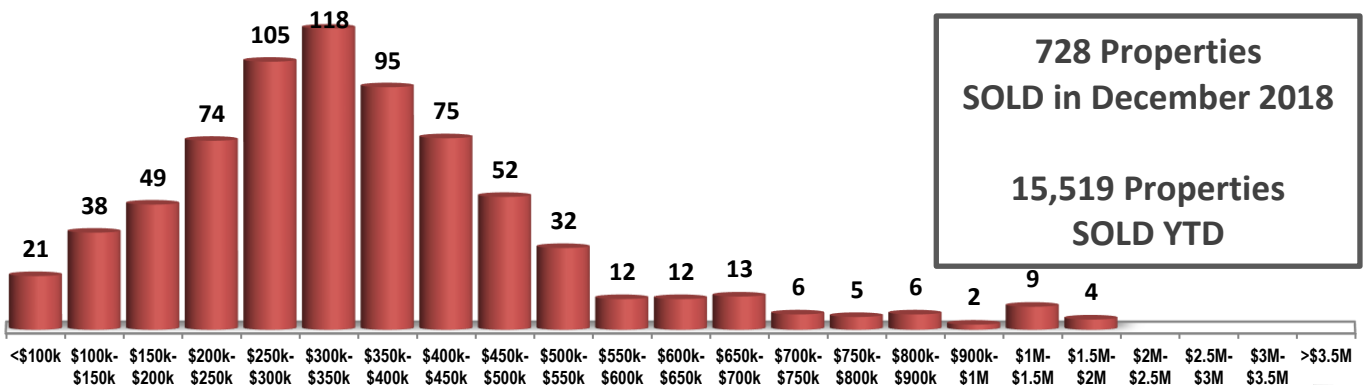
MONTHS OF INVENTORY



SOLD / INVENTORY / NEW LISTINGS



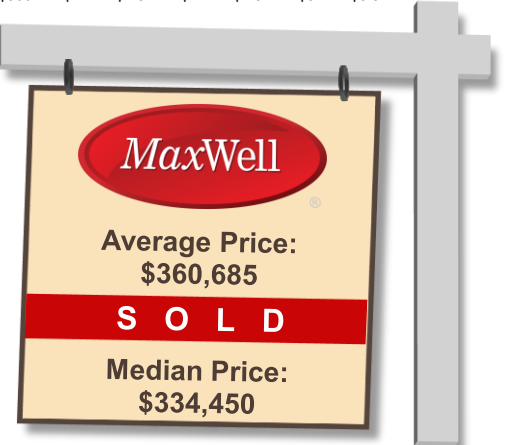
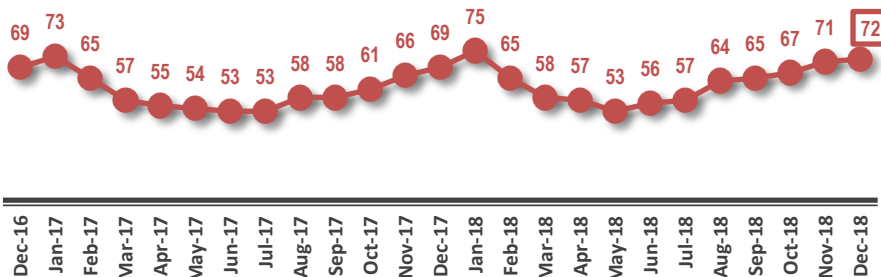
SOLD PROPERTIES BY PRICE RANGE



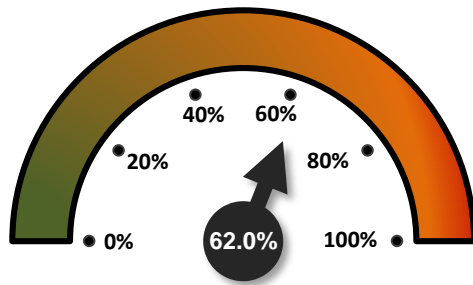
**728 Properties
SOLD in December 2018**

**15,519 Properties
SOLD YTD**

AVERAGE DAYS ON THE MARKET



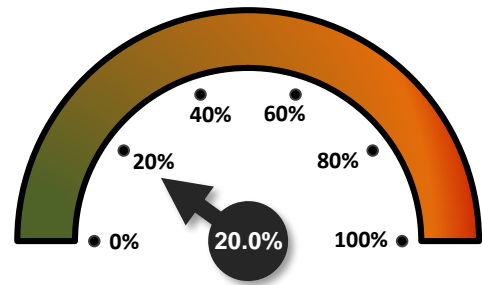
SALES-TO-NEW LISTINGS RATIO



↑ FROM 50.5% IN NOVEMBER 2018

↓ FROM 74.2% IN DECEMBER 2017

ODDS OF SELLING IN 90 DAYS OR LESS



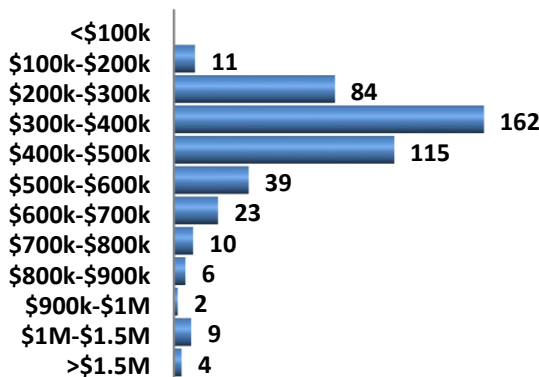
↓ FROM 20.6% IN NOVEMBER 2018

↓ FROM 24.7% IN DECEMBER 2017

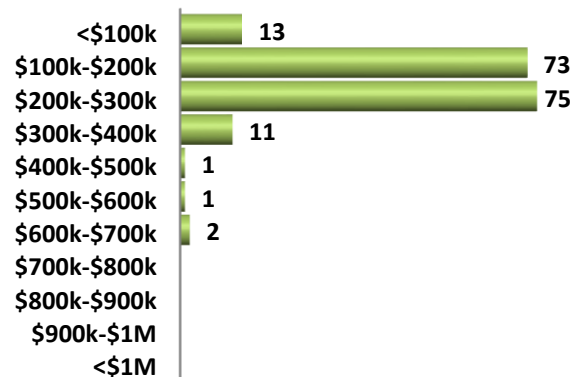
DETAILS BY PROPERTY TYPE

	DETACHED SINGLE FAMILY HOMES	CONDOMINIUMS	DUPLEXES / ROW HOUSES
AVERAGE SOLD PRICE	\$427,892	\$205,947	\$345,753
MEDIAN SOLD PRICE	\$383,500	\$203,500	\$325,000
SOLD PROPERTIES	465	176	73
SOLD PROPERTIES YTD	9,653	3,967	1,598
NEW LISTINGS	623	400	106
AVERAGED DAYS ON THE MARKET	69	78	78

SINGLE FAMILY DETACHED SOLD BY PRICE RANGE



CONDOMINIUMS SOLD BY PRICE RANGE



AVERAGE SOLD PRICES OVER 2 YEARS

