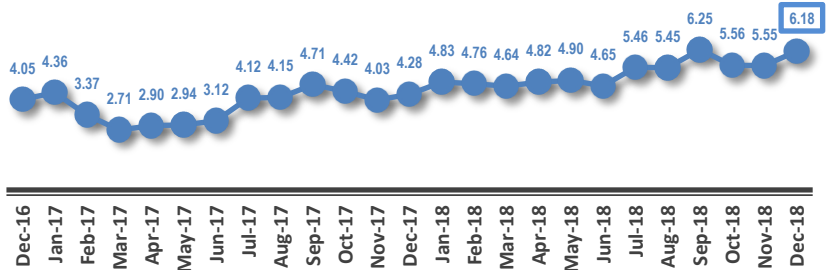
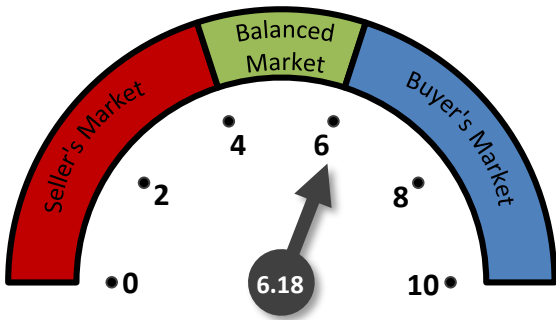
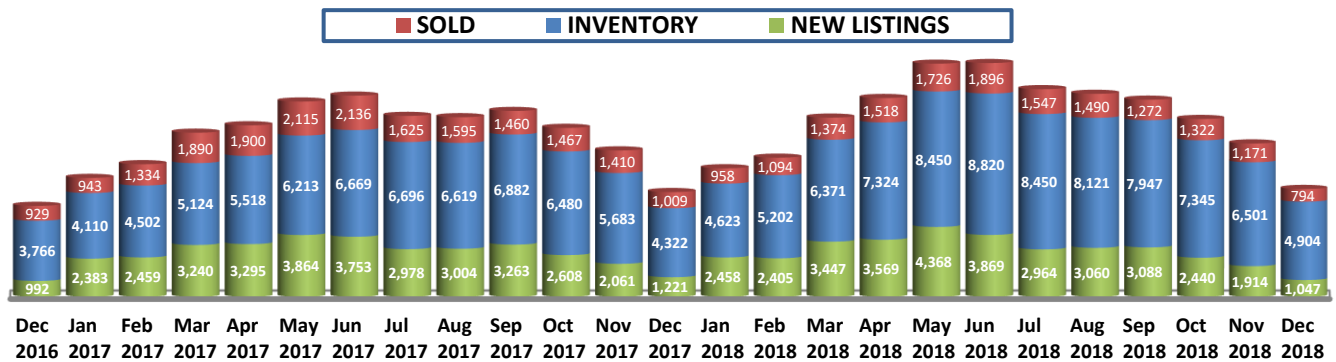


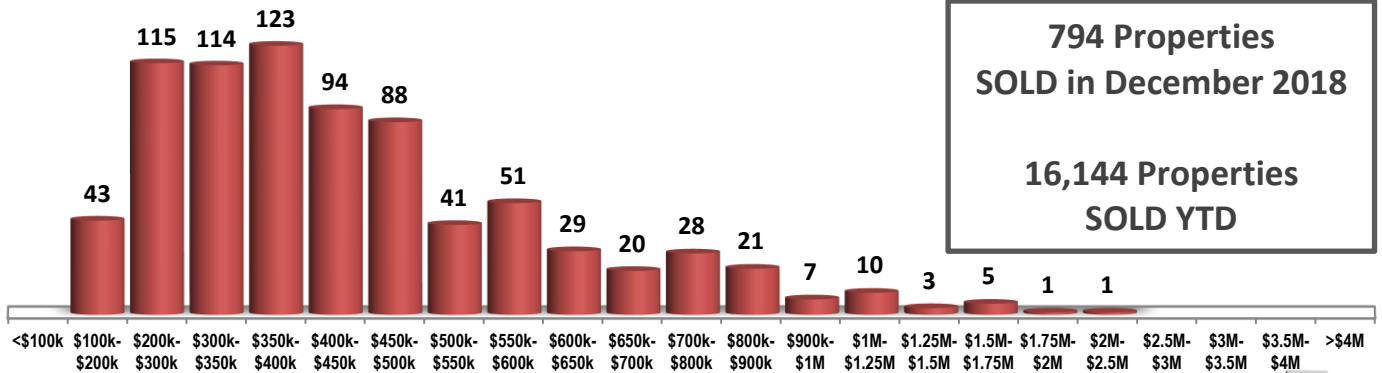
**MONTHS OF INVENTORY**



**SOLD / INVENTORY / NEW LISTINGS**



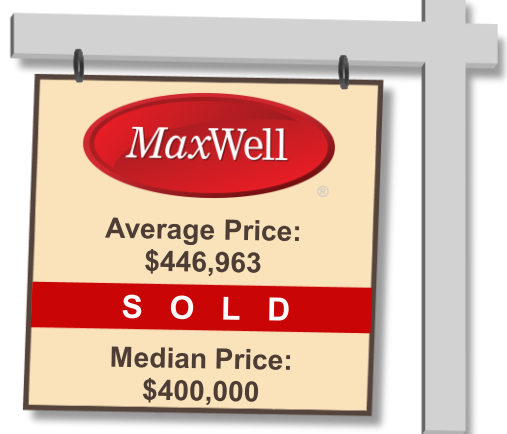
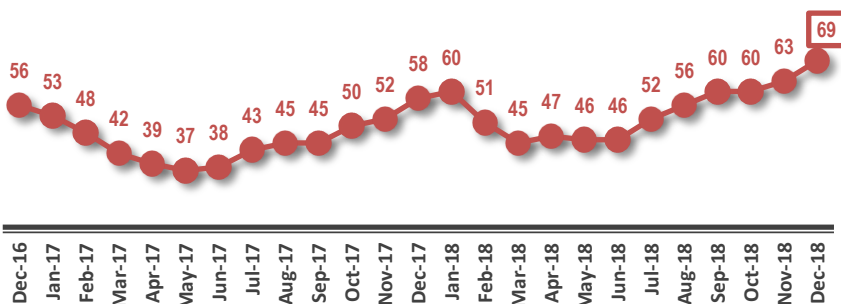
**SOLD PROPERTIES BY PRICE RANGE**



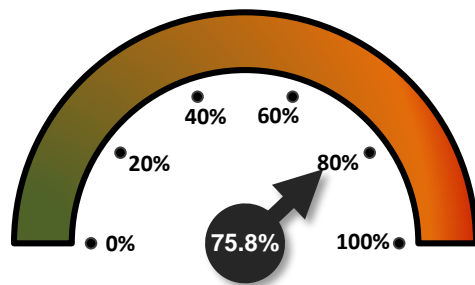
**794 Properties  
SOLD in December 2018**

**16,144 Properties  
SOLD YTD**

**AVERAGE DAYS ON THE MARKET**



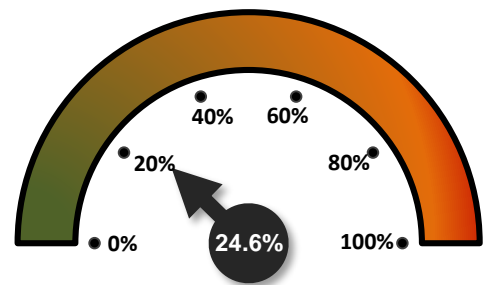
**SALES-TO-NEW LISTINGS RATIO**



↑ FROM 61.2% IN NOVEMBER 2018

↓ FROM 82.6% IN DECEMBER 2017

**ODDS OF SELLING IN 90 DAYS OR LESS**



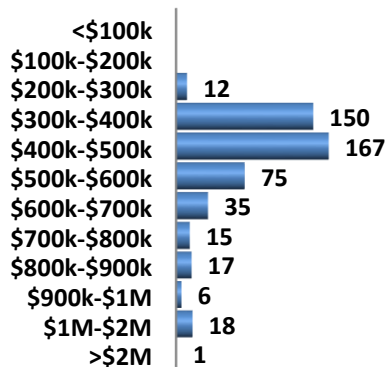
↑ FROM 24.2% IN NOVEMBER 2018

↓ FROM 30.4% IN DECEMBER 2017

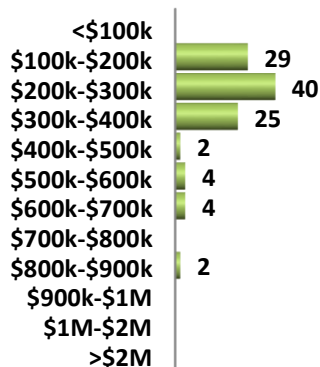
**DETAILS BY PROPERTY TYPE**

	DETACHED HOMES	APARTMENTS	ATTACHED HOMES
AVERAGE SOLD PRICE	\$509,127	\$283,619	\$376,551
MEDIAN SOLD PRICE	\$450,000	\$240,000	\$327,450
SOLD PROPERTIES	496	106	192
SOLD PROPERTIES YTD	9,945	2,663	3,536
NEW LISTINGS	577	213	257
AVERAGED DAYS ON THE MARKET	66	74	74

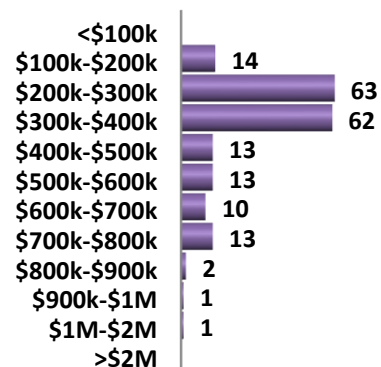
**DETACHED HOMES SOLD BY PRICE RANGE**



**APARTMENTS SOLD BY PRICE RANGE**



**ATTACHED HOMES SOLD BY PRICE RANGE**



**AVERAGE SOLD PRICES OVER 2 YEARS**

